

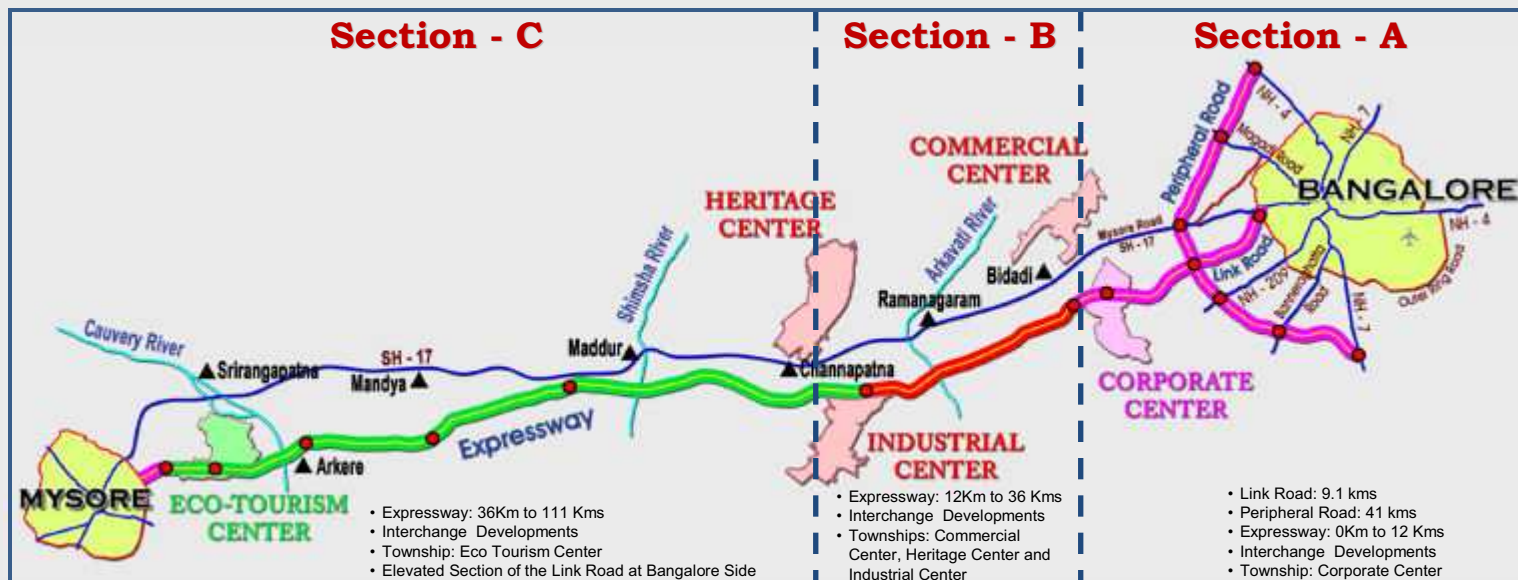
# NICE - A SUBSIDIARY OF BF UTILITIES



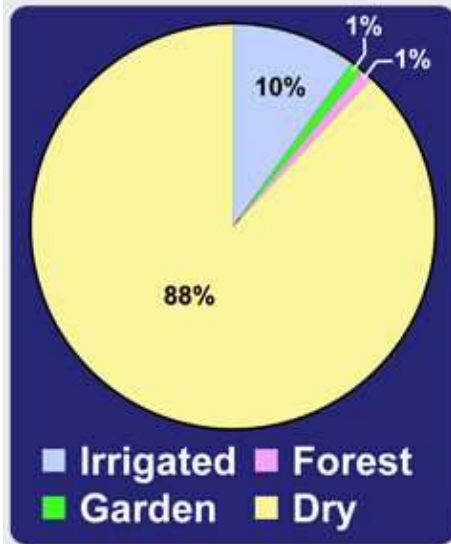
# NICE : Implementing BMIC Project



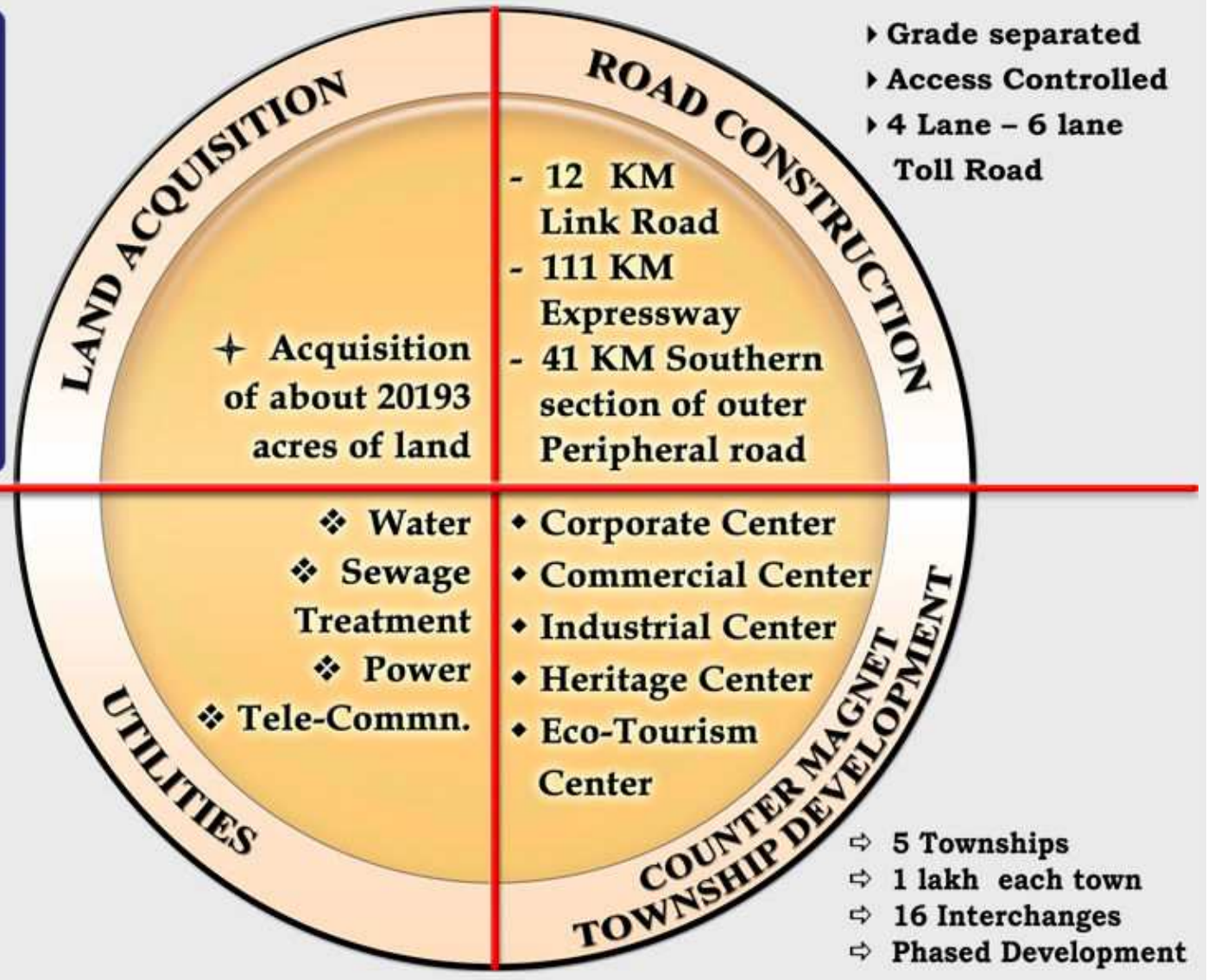
- Nandi Infrastructure Corridor Enterprise Ltd. (NICE) is implementing the Bangalore Mysore Infrastructure Corridor (BMIC) Project, a world class integrated infrastructure development project, which consists of :
  - A 164 km tolled expressway connecting Bangalore and Mysore with following road components :
    - a 9.1 km Link road connecting Centre of Bangalore with the Peripheral Road
    - a 41 km Peripheral Road around the City of Bangalore linking Hosur Road - NH-7 to Tumkur Road – NH-4
    - a 111 km Expressway between Bangalore & Mysore
    - a 3 km Elevated Road at Bangalore Side
  - 5 New Township Developments along the Expressway between Bangalore and Mysore
  - Concomitant development at the interchanges along the Peripheral Road and Link Road
  - Rights to supply power, water, telecommunication services, sewage and waste water management etc.
  - Single planning authority – Bangalore Mysore Infrastructure Corridor Area Planning Authority (BMICAPA) – for the entire project
- Concession period for toll road is 40 years including 10 years of construction period



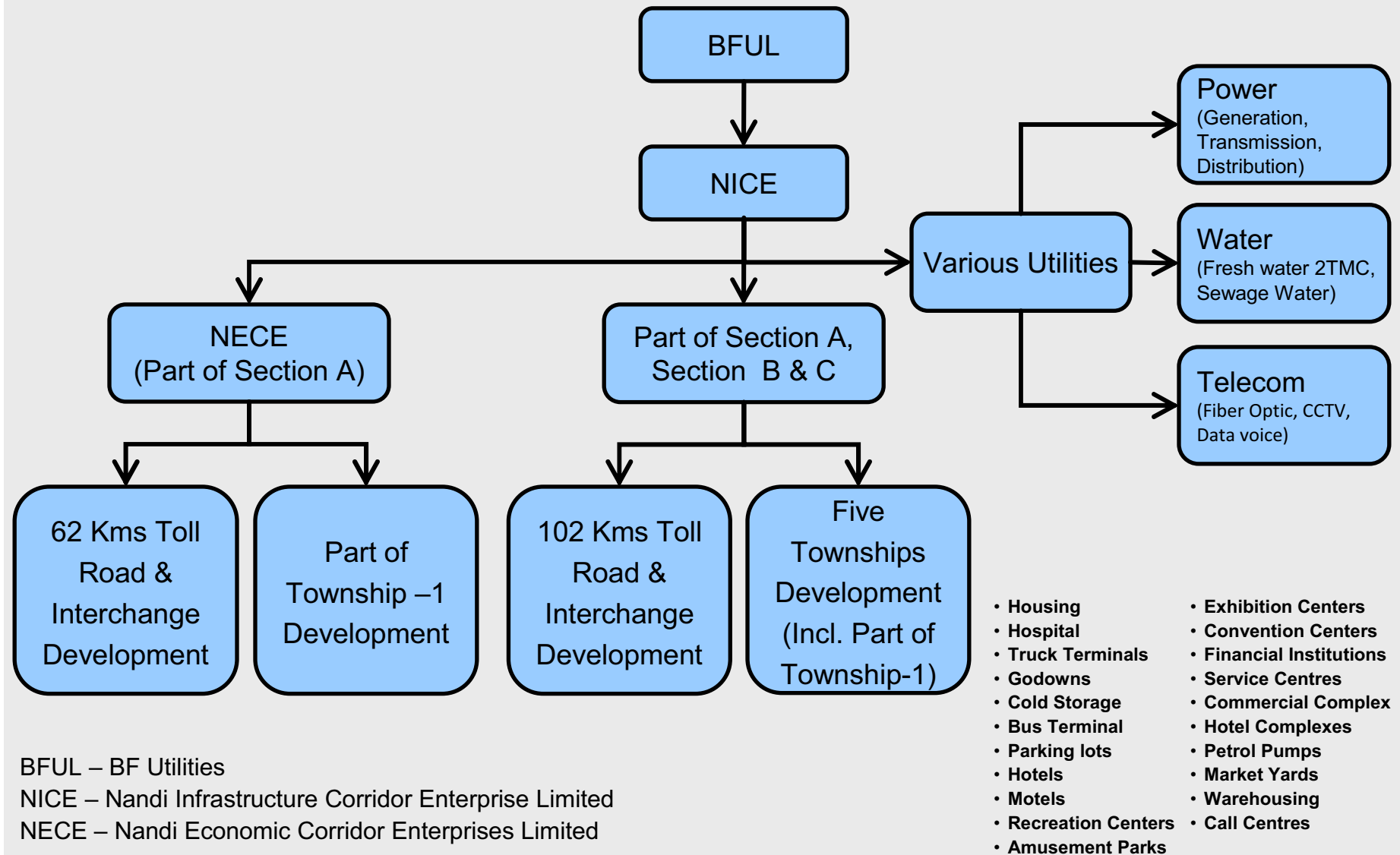
# BMIC Project



- Each neighborhood with
- ❖ Shopping Center
  - ❖ Informal area for entertainment
  - ❖ Education, health facility
  - ❖ Other amenities of Post Office, Police station, Gym, Library
  - ❖ Self sustaining unit with full range of facilities for all age groups



# NICE : Structure



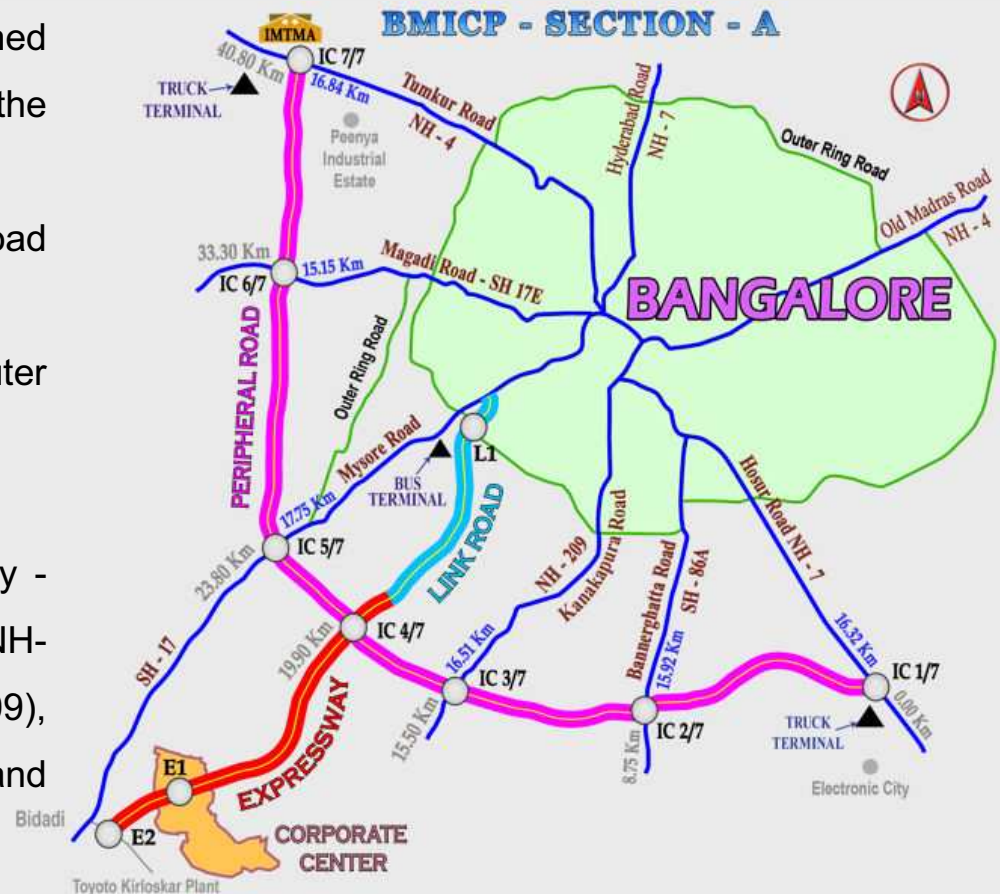


# BMIC Project – Part of Section A By NECE

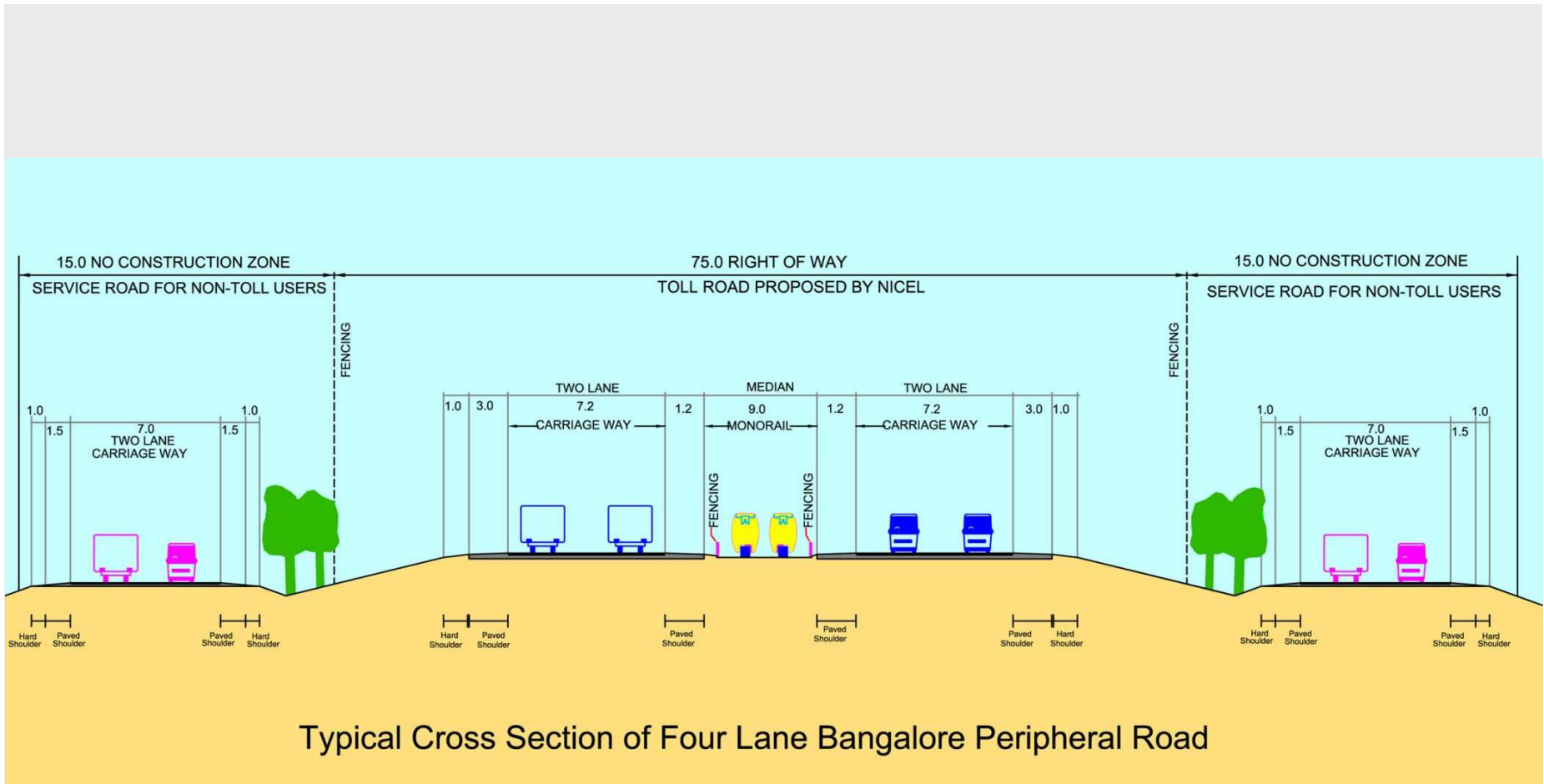


Nandi Economic Corridor Enterprises Ltd. (NECE), a 64.77% subsidiary of NICE, has been assigned the right to develop the Part of Section - A of the BMIC Project consisting of :

- 41 km Outer Peripheral Road linking Hosur Road to Tumkur Road
- 9.1 km Link Road linking city centre to Outer Peripheral Road
- 12 km Expressway up to Bidadi
- Interchanges at the intersection of Expressway - Link Road, Hosur Road (NH-7), Tumkur Road (NH-4), Banerghatta Road, Kanakpura Road (NH-209), Mysore Road (SH-17), Magadi Road and intersection of Link Road – Outer ring road
- Part of First Township - 1 near Bidadi
- Total land for NECE : 6173 acres



# Concept of Service Roads & Mono Rail in Median



Typical Cross Section of Four Lane Bangalore Peripheral Road





# Improved Connectivity in the Region



## Economic Development Corridor





# NECE :Toll Road



Total Length of the Road - 62 Km - With Superior Specifications & Planning

## 1. International quality standards followed for the road construction



Overpass / Underpass at every 500 mts distance



Two Ramps on each side at Interchanges



Boundary Wall on Both sides of Road



Noise Barriers

# NECE :Toll Road



**Total Length of the Road - 62 Km - With Superior Specifications & Planning**

## **2. The Resettlement & Rehabilitation (R&R)**

**Old House**



**New House**



**Ruined Old Temple**



**New Temple**





# Clover Leaf on Peripheral Road & Expressway Junction





# Peripheral Road avoiding Water Bodies





# Interchange on Peripheral Road 1/7 – (Hosur Road)





# Section of Peripheral Road from IC 3/7 to 4/7





# Section of Link Road



**THANK YOU**

